

**NEW**



Quality and reliability is our tradition

**KYORITSU**

# AC DIGITAL CLAMP METER KEW 2007R

## **De Facto Standard 1000A AC Clamp meter**



**TRUERMS**

|           |             |                 |     |
|-----------|-------------|-----------------|-----|
| TRUE RMS  | CAT IV 300V | CAT III 600V    | Ø33 |
| MAX 1000A | AC A        | DC AC V         | Ω   |
| •)))      | DATA HOLD   | AUTO POWER SAVE |     |

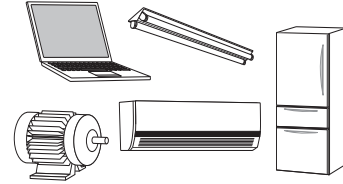
- **Fully Safety jaw**
- **Ergonomic over-molded body gives convenient one-hand operation**
- **Large easy-to-read display with 0.1 A resolution**
- **Accurate reading with True RMS 600/1000A auto-ranging**
- **Long battery life**
- **Safety Standard IEC61010-1 CAT IV 300V / CAT III 600V**

CE

● KEW 2007R Specifications

|                           |                                                                                                                                                          |
|---------------------------|----------------------------------------------------------------------------------------------------------------------------------------------------------|
| AC A                      | 600.0/1000A (Auto-ranging)<br>±1.5%rdg±4dgt [45 - 65Hz]<br>±2.0%rdg±4dgt [40 - 400Hz]                                                                    |
| AC V                      | 600.0V<br>±1.2%rdg±3dgt [45 - 65Hz]<br>±1.5%rdg±4dgt [40 - 400Hz]                                                                                        |
| DC V                      | 600.0V<br>±1.2%rdg±3dgt                                                                                                                                  |
| Ω                         | 600.0Ω/6.000kΩ (Auto-ranging)<br>±1.3%rdg±5dgt (600Ω)<br>±2.0%rdg±3dgt (6.000kΩ)                                                                         |
| Continuity buzzer         | 600Ω (Buzzer sounds below 90Ω)                                                                                                                           |
| Conductor size            | Ø33mm max.                                                                                                                                               |
| Applicable standards      | IEC 61010-1 CAT IV 300V, CAT III 600V Pollution degree 2<br>IEC 61010-031, IEC 61010-2-032, IEC 61010-2-033,<br>IEC 61326-2-2, IEC 60529, EN 50581(RoHS) |
| Power source              | R03/LR03(AAA)(1.5V)×2                                                                                                                                    |
| Continuous measuring time | Approx.170 hours (when R03 is used)<br>(Auto power save : approx.10 minutes)                                                                             |
| Dimensions/Weight         | 204(L)×81(W)×36(D)mm / 220g Approx. (including batteries)                                                                                                |
| Accessories               | 7066A (Test leads), 9079 (Carrying case), R03(AAA)×2,<br>Instruction manual                                                                              |
| Optional                  | 8008 (Multi-tran)                                                                                                                                        |

True RMS function for accurate readings also in presence of modern loads such as LED lamps, motor inverters, PCs, TVs, Air conditioners, etc.



| Waveform | True RMS type   | Averaging value type |
|----------|-----------------|----------------------|
|          | <b>TRUE RMS</b> | correct reading      |
|          | correct reading | higher reading       |
|          | correct reading | lower reading        |
|          | correct reading | lower reading        |



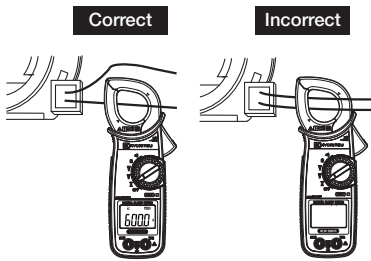
● Accessories



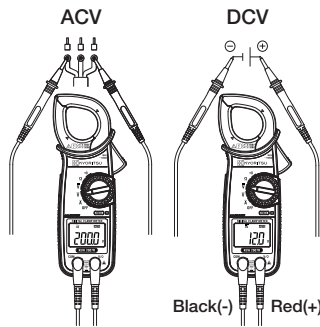
● Optional



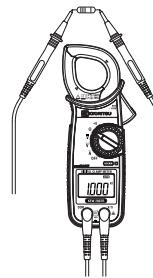
**A** Current Measurement



**V** Voltage Measurement



**Ω** Resistance Measurement



**Continuity Measurement**

